

ATZGB-

ATZGB-F4

SAMD20

AT86RF

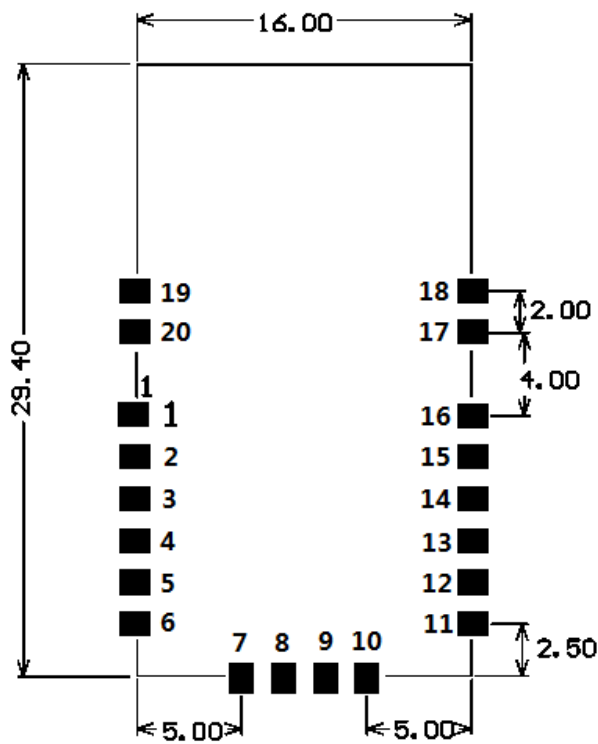
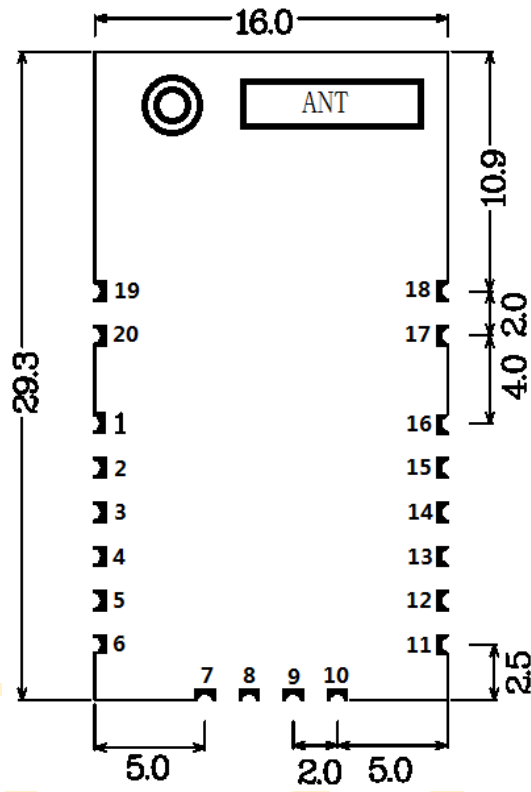
780MHz 802.15.4C/ZigBee

ATZGB

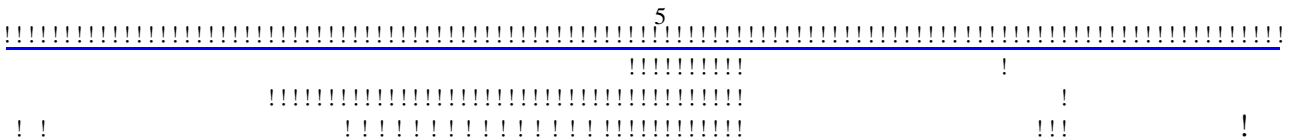
V1.01

Beijing ATZGB Technology Co., Ltd.

	2
	2
	3
2.1.	3
2.1.1	3
2.2	4
2.3	4
2.4	4
2.5	6
	8
	9
4.1 2.4G	9
4.2	9
	9
	11
	12
7.1	12
7.2	12
	13



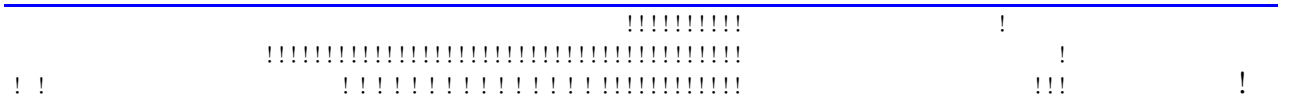
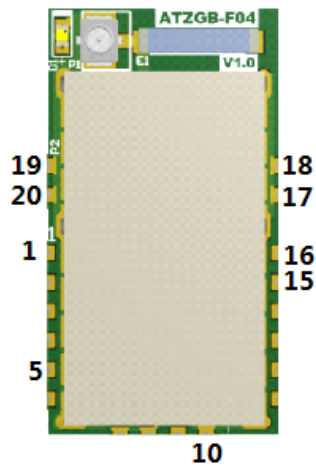
PCB



2.5

2.5.1

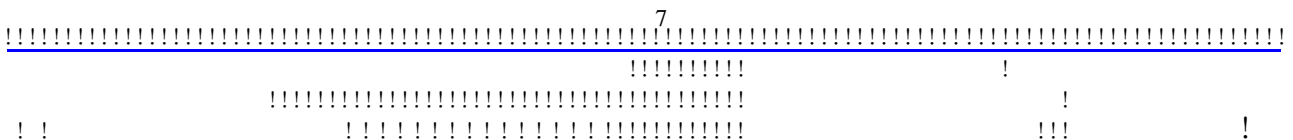
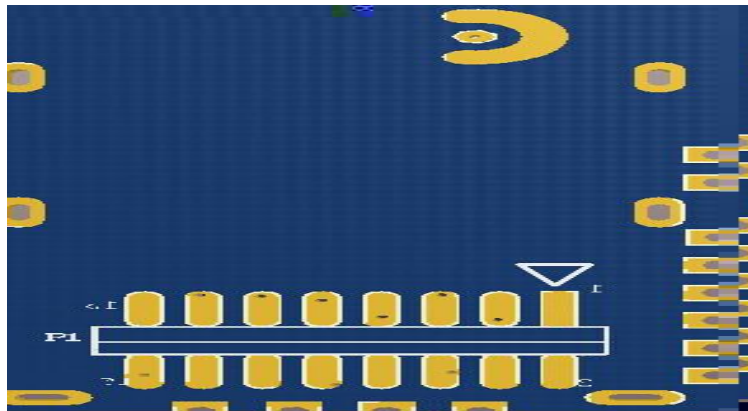
			I/O
1	PWM1-OUT	1 PWM-W/W/R	DO
2	PWM2-OUT	2 PWM-W/R/R	DO
3	PWM3-OUT	3 PWM-C/G/R	DO
4	PWM4-OUT	4 PWM-C/B/B	DO
5	IO1	UART0_TXD/I2C_SCL/GPIO1	DIO
6	IO2	UART0_RXD/I2C_SDA/GPIO2	DIO
7	VCC	2.0~3.6V	POWER
8	VCC	2.0~3.6V	POWER
9	GND		POWER
10	GND		POWER
11	ADC4-IN	1-W	AI
12	ADC3-IN	2-R	AI
13	ADC2-IN	3-G	AI
14	ADC1-IN	4-B	AI
15	IO3	UART2_TXD/GPIO3	DIO
16	IO4	UART2_RXD/GPIO4	DIO
17	SDA	GPIO-PA31/SDA	DIO
18	GND		POWER
19	SCLK	GPIO-PA30/SCLK	DIO
20	nRESET		DI

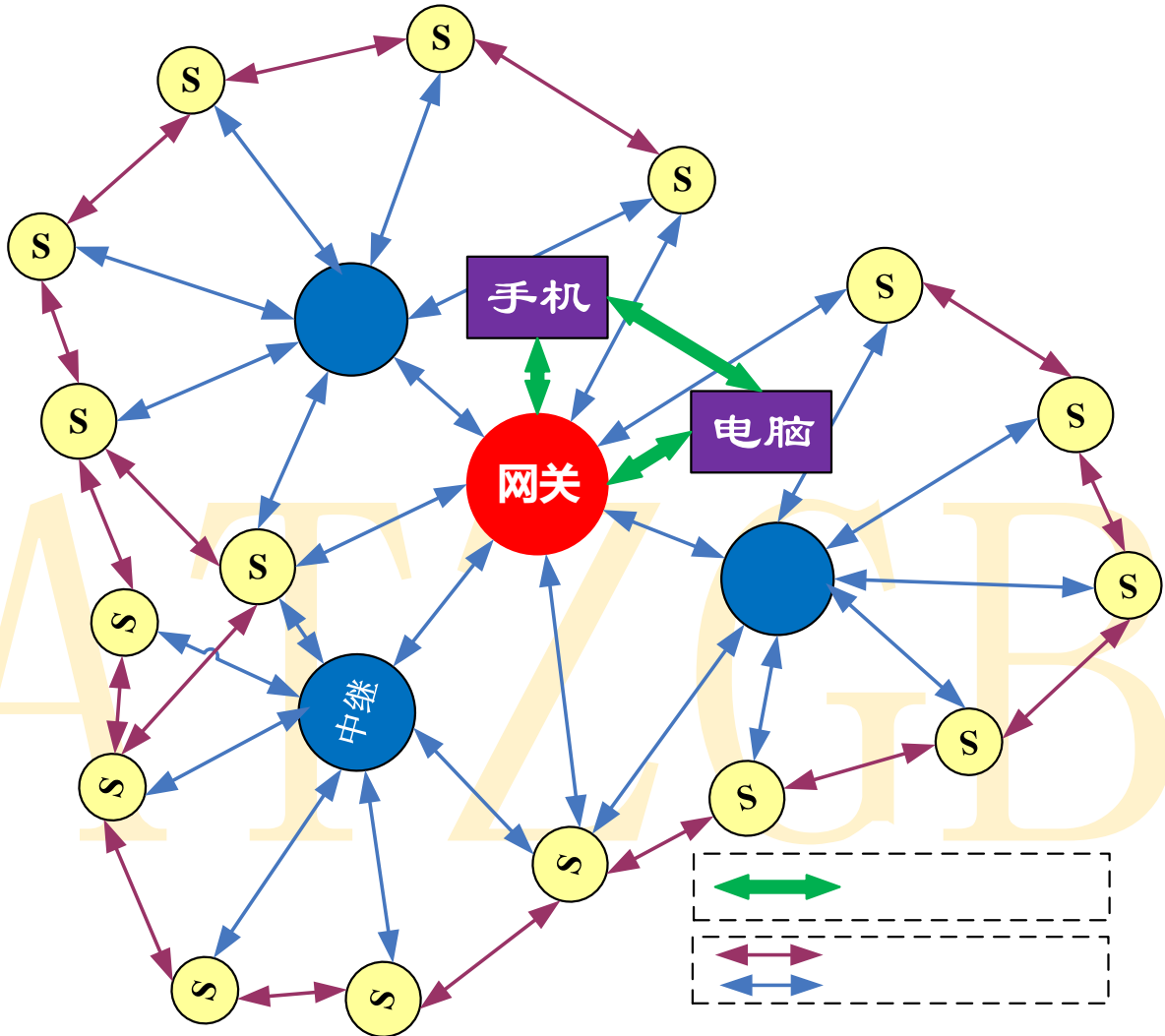


2.5.2

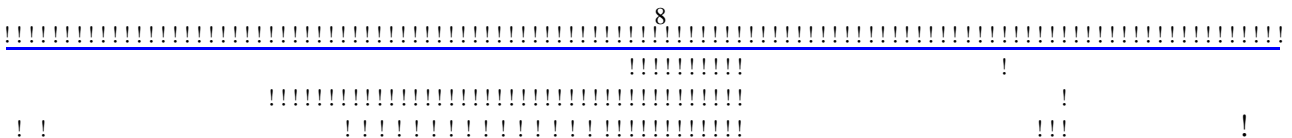
1.27mm

			I/O
1	PWM3-OUT	PWM-R	O
2	VCC	3.3~3.6V	POWER
3	PWM2-OUT	PWM-G	O
4	VCC	3.3~3.6V	POWER
5	PWM1-OUT	PWM-B	O
6	PWM4-OUT	PWM-W	O
7	ADC4-IN	1-W	AI
8	ADC3-IN	2-R	AI
9	IO1	UART0_TXD/I2C_SCL/GPIO1	IO
10	ADC2-IN	3-G	AI
11	IO2	UART0_RXD/I2C_SDA/GPIO2	IO
12	ADC1-IN	4-B	AI
13	IO3	UART2_TXD/GPIO3	IO
14	GND		POWER
15	IO4	UART2_RXD/GPIO4	IO
16	GND		POWER



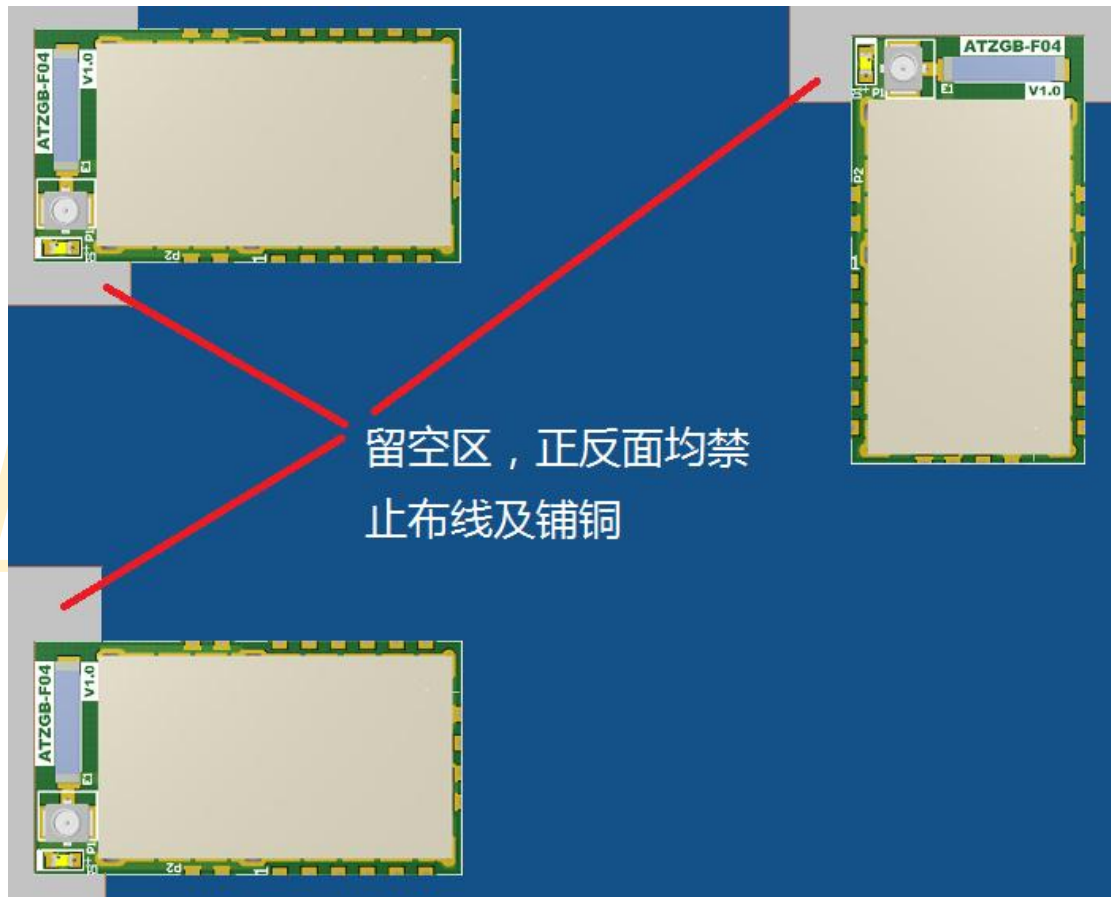


Light-Mesh !



4.1 2.4G

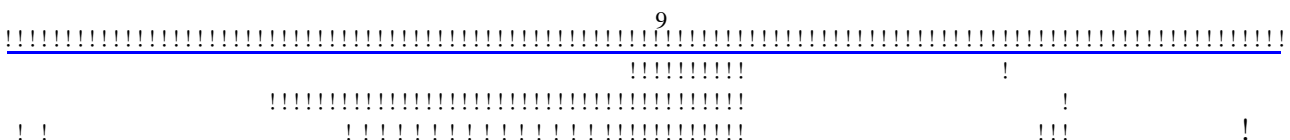
2.4G

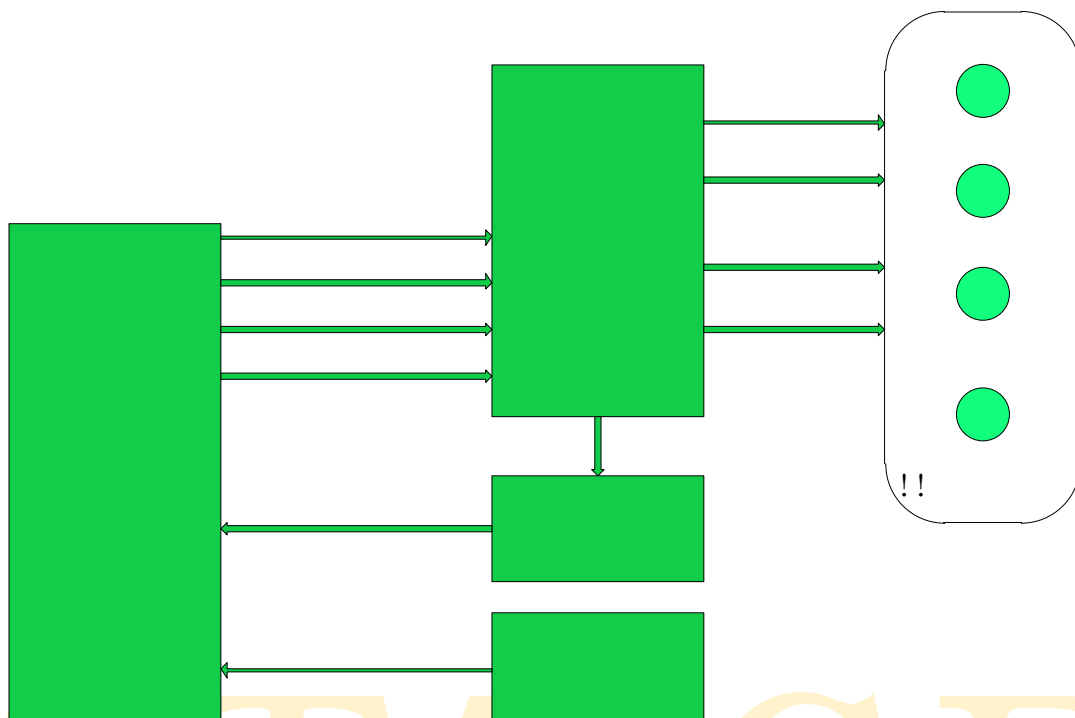


4.2

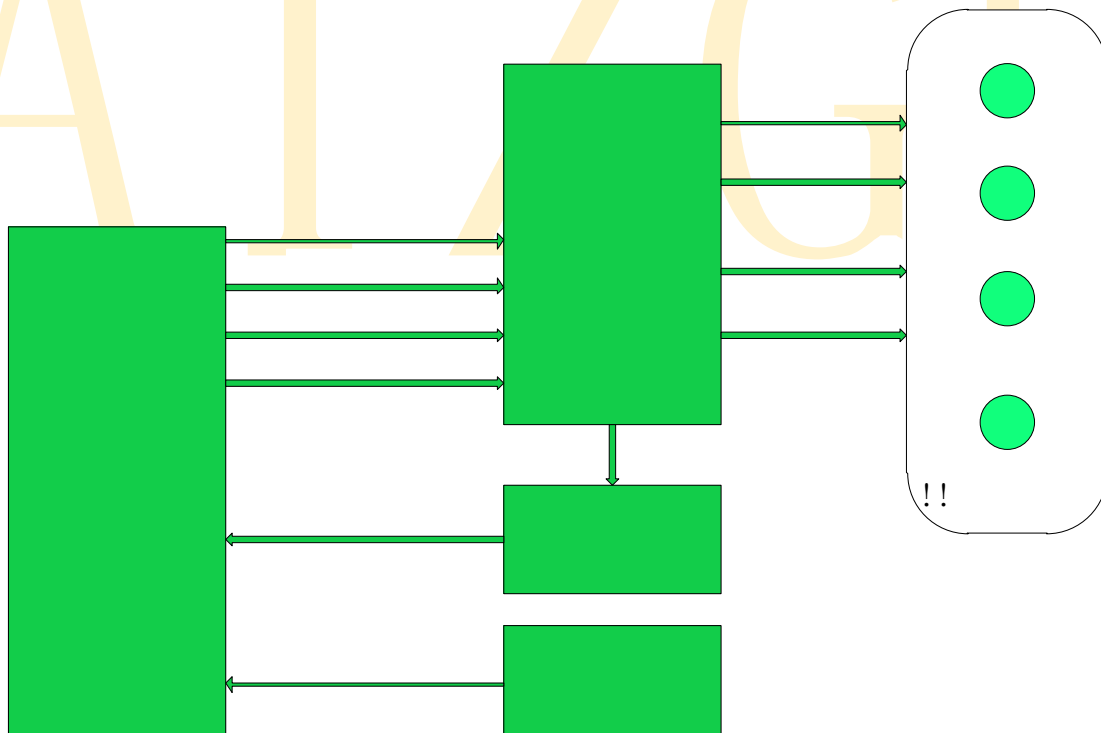
I-PEX

5.1

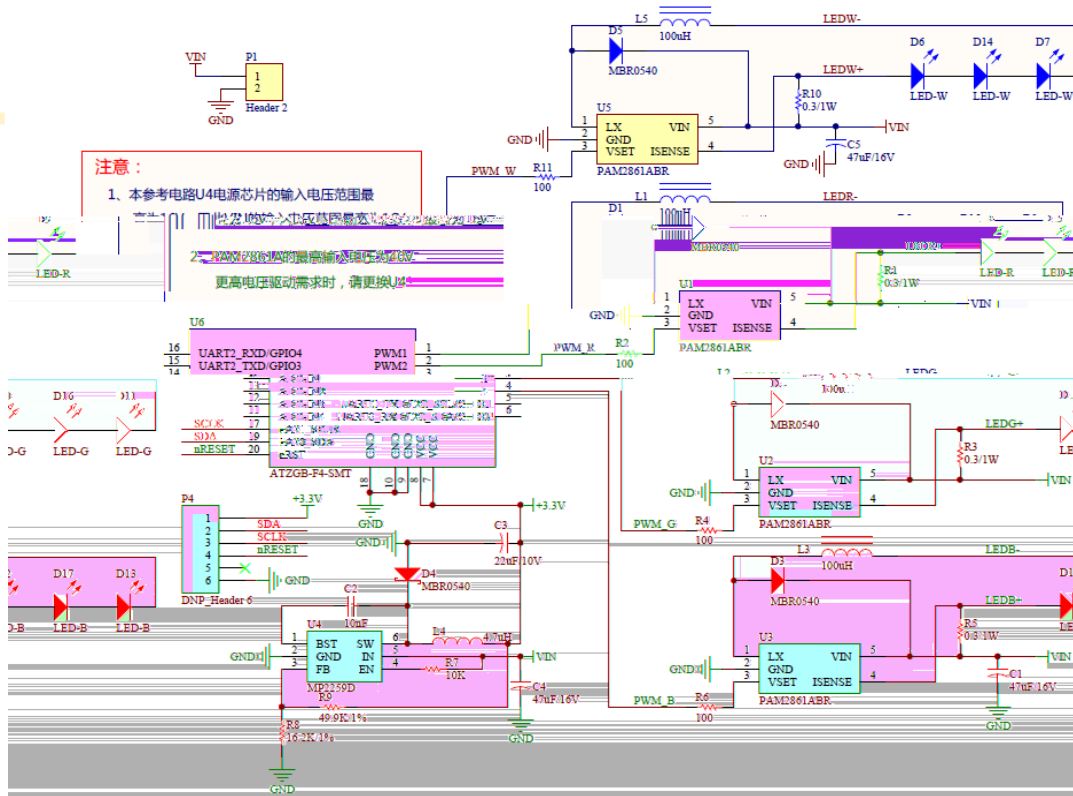
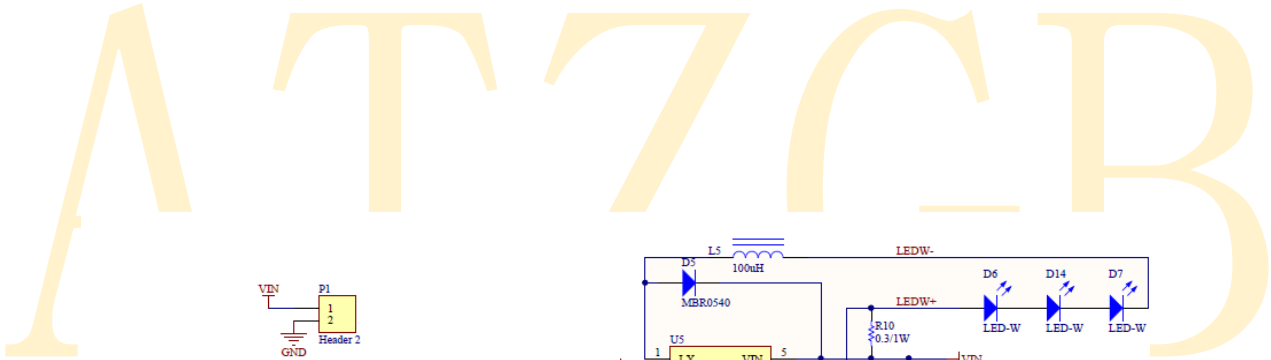
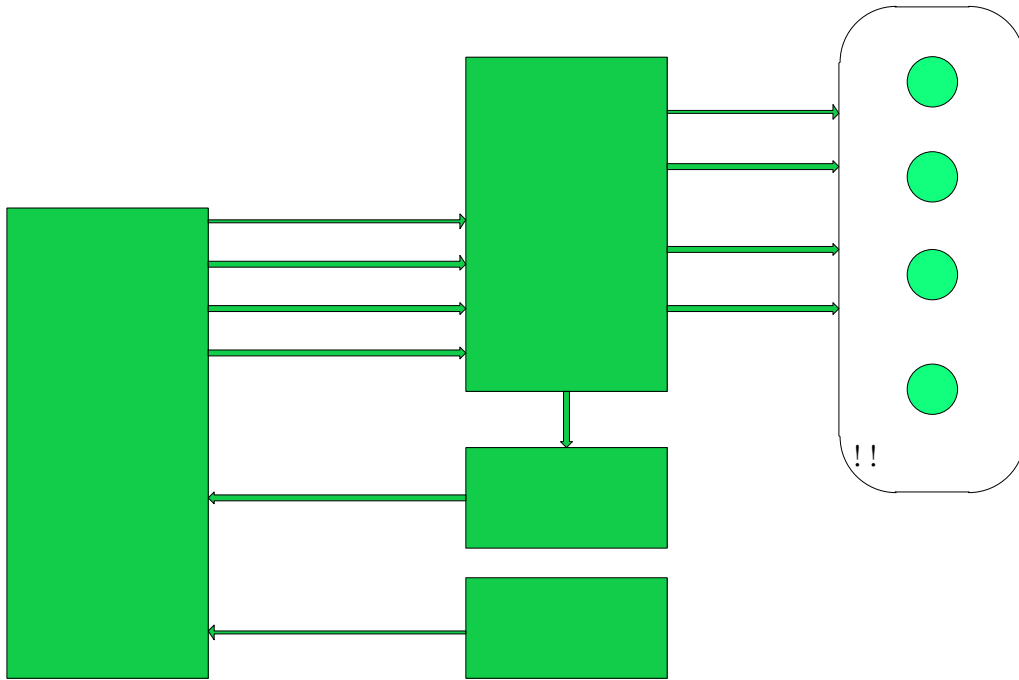




5.2



5.3



!

7.1

ATZGB-7800F4-S	700/800/900 MHz	
ATZGB-2400F4-S	2.4GHz	
ATZGB-780F4-P	700/800/900 MHz	1.27
ATZGB-2400F4-P	2.4GHz	1.27

7.2

7.2.1

9 00- 6 00 2 2 20 B
+86 (10) 82176393
+86 (10) 82176393

7.2.2

9 00- 6 00 3 B 2106
0755-89355501
0755-89355501

7.2.3 QQ

LED 应用支持群：11664201 (群号码)!



